

Introduction: .....	1
Installing Chatter™ Link on your PC .....	2
Introduction to using Chatter™ Link .....	3
Manual program update check .....	4
Start window .....	4
Start wizard .....	4
Connect to a Chatter .....	4
Open a saved configuration .....	4
Communication setup .....	4
Release notes .....	5
840400-005 Build Sep. 28, 2017 .....	5
Chatter firmware include in program .....	7
850010-003 Chatter RTU (compare to 850009-005) .....	7
840054-003 Chatter Email (compare to 850053-005) .....	8
840004-001 Chatter Database (DB) (compare to 850003-003) .....	8

## Introduction:

Thank you for choosing Chatter™ Data Logger. We have done our best to design and produce a quality data logger to meet your requirements.

To ensure the best result MJK recommends that the user reads this manual to become familiar with all features, functions and details of the Chatter™ Data Logger

Install and use the Chatter™ Data Logger as instructed by the manufacturer, MJK, to ensure reliable operation and accurate measurements.

You can always get in touch with your supplier or with an MJK support hotline for advice and guidance:

Area	Phone	Web
World	+45 45 56 06 56	Visit our website <a href="http://www.mjk.com">www.mjk.com</a> to read more about MJK, our other products and the people behind.

Chatter™ is a registered trademark with MJK, Denmark.

## Installing Chatter™ Link on your PC

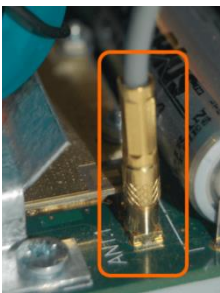
You must install the program on your PC before you can use it.

- The Chatter™ Link program is in a zip-file. Unzip it to a folder on your desktop.
- Double-click the “840400-005 Chatter Link....exe” file to start install and finish this.

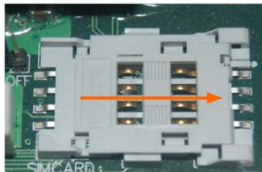
“Chatter USB Driver – CDM...zip” is normally only needed to be install if windows don't automatically findes the driver. (Windows need internet connection for this)

First time a new Chatter is connected to the PC it may take 1 – 2 minute before windows is finished setup driver for this Chatter.

First after that it is possible to connect to with Chatter™ Link to chatter.



Connect the antenna cable to the connector.  
The connector must 'click' in place.



The holder for the SIM-card is on the right side of the printed circuit board.  
Push the SIM-card cover to the right to open it.



Power ON

Move the battery power jumper so it connects the two leftmost pins - this is the ON-position.



Connect USB

Wait for driver to finish installing before start Chatter™ Link connecting.

Configuration mode is signaled by a red light next to the USB connector.  
You can force the Chatter™ Data Logger into configuration mode with the switch next to the USB connector.

Please read the more detailed “Initial setup” in Chatter™ Link manual.

## Introduction to using Chatter™ Link



Open saved configuration for view or writing to level transmitter



Save configuration from level transmitter



Click to open help documentation.



Read configuration from a connected level transmitter.



Write changed configuration to connected level transmitter.

A change in configuration view is not automatic written to level transmitter.

This “Write to sensor” has to be done before the changed configuration is transmitted to the sensor.



Connect / Disconnect communication to level transmitter.



Start level transmitter configuration wizard.



Live view of measurement / Go to main screen and stop live view.



Go back to see loaded configuration.



Open Function for update / change firmware or other action related to device.



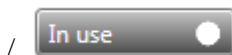
Cancel / Close a window



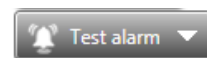
Yes / Okay to continue a task



Back / Next in a wizard task



Check box button



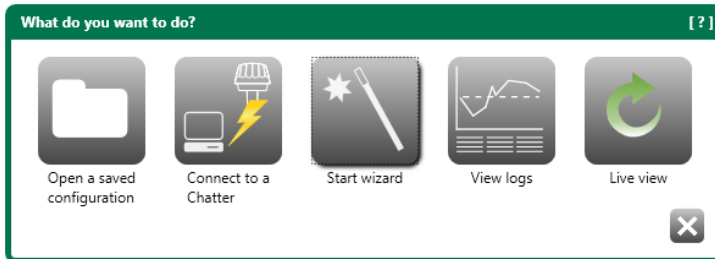
Selections button used to open window with selection options.

## Manual program update check



Check for Chatter™ Link update now. It will auto check every 30 days.

## Start window

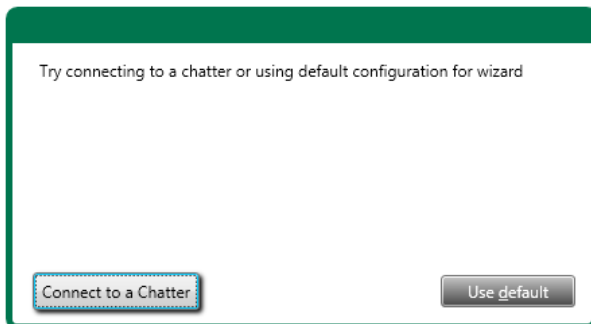


### Start wizard

“Start wizard” is used when the device is configured for the first time.

It is recommended to have the device connected when using wizard and use “Connect to a Chatter”

It is possible to use wizard without a device connected. (“Use default”)



### Connect to a Chatter

“Connect to a Chatter” is used when the device is configured and measurement view or additional configuration has to be done.

### Open a saved configuration

“Open a saved configuration” is used when a device configuration is already saved.

No connection to a sensor is needed for using this.

### Communication setup

Communication settings are first changed after level transmitter has been power off or forced to “Reset hardware”. (Done in “Functions”)

## Release notes

### **840400-005 Build Sep. 28, 2017**

#### *What is new / changed compare to 840400-004*

- Support automatic inset of modem init. string for needed for use of APN Username and password containing "@" (fix for the Holland)
- For 850004 Chatter DB or older, reading of configuration done only by 840136 Chatter Link web client.
  - Allow use scale and calibration wizard (is only working from firmware 850004 Chatter DB )
- Allow more advanced settings in Application view mode(single page view). ex.
  - SMS filter.
  - Auto run schedule on xx new logs
  - Email max log count (+ more possible max. numbers to select between), Max email transmission time.
  - Max modem online time.
  - INET communication
  - Power management.
- Wizard selection for power stabilizing time is optimized depending of what application is selected (before default setup was always 5s)
- Wizard SCADA setup for "VA-Operatör, Cactus, Uni-View" as GSM
- Wizard setup for 850010 or newer Chatter RTU + 850054 or newer Chatter Email
  - Climate station – oxygen (ODO + Expert hydrostatic level transmitter).
  - SonTek-IQ / SL intelligent flow sensor
  - Standard setup for easier enable DI3, AI4 as voltage monitor and DI4 for Test Alarm (Read more about wizard Hardware "standard" setup in manual "Hardware" appendix)
- Log recovery read for 850010 or newer Chatter RTU + 850054 Chatter Email
- Wizard Unit label is change from "mWc" to "mH2O"
- Legacy SCADA system setup. Please read more here 850010 or newer Chatter RTU
- 850010 or newer Chatter RTU setup of Comli low (Function 48,50) including read of Scada Log using "Standard" MJK page 4(AI1) - 7(AI4) change .
- 850010 or newer has added scaling support for Scada Log. (Also change application wizard to only have a Specific setup for SCADA system ex. "VA-Operatör, Cactus, Uni-View" )
- 850010 or newer has added Legacy signals (Number 1 - 8) for scaling and layout change to U16, S16.. (used with "VA-Operatör, Cactus, Uni-View" SCADA setup)
- Chatter modem call debug view is supported
- Support disable of pop up for setup chatter time table. (Intended for user that need all chatter to only return time in email or SMS as UTC)
- Optimize saved log read speed, updated log Graph view including possibility to maximize possible view for logs and graph, allow save of 1.000.000 in CSV file.

- Allow multiple email addresses in a single address field using ";" as separator. This will improve transmission time and reduce battery use.
- Automatic firmware verification after firmware upgrade with RTU + e-mail.
- Show error if APN / Email Server password is missing to be changed (Using PASSWORD in text)

#### **Bug fixed**

- General optimize log read, view. (Log read fails in some cases after a reconnection to a chatter. + including some other small bug fixes on log read handling)
- Fix / workaround on SCADA SMS filter and time setup on older firmware than 850010 Chatter RTU
- Firmware 850004 or newer Chatter DB and modem call debugging and modem call is working better.
- Miscellaneous minor fix, optimize.
- E-mail connection to "mail.mjk-link.dk" using the modem firmware Version 1.3.  
This e-mail fix result in that in special case user may need bracket "<" ">" around receiver e-mail.  
Ex. <test1@mail.com> please read manual about "Recipient".

#### **Know limitations**

- Chatter DB is not supported in log read.

## ***Chatter firmware include in program***

### **850010-003 Chatter RTU (compare to 850009-005)**

#### ***What is new / changed compare***

- Rounding float printout to sms to closes value that fitting setting for number of digits to show (ex 0.039856 with 2 digit show 0.40 and not 0.39 as before )
- Support YSI ProODO oxygen sensor.
- Added support for read with modbus function 4 (Read input registers)
- Added support for INET 115200 (Used by ProODO)
- Support log recovery read with Chatter Link PC software.
- Support COMLI Low or function "0"(48) / "2"(50) including read of extended logs on pages 4 - 7 (Using same setup as SCADA log 1 - 4 )
- Support Legacy Signal 1 .. 8 that is used to manipulate Float values with scaling and to other layout (ex. U16, S16 used in COMLI Low)
- Support Special Log Pattern fill with DI1-DI4 (only possible to use with 840126 or 840400 Chatter Link in service mode.

#### ***Bug fixed***

- Fix that when log is full at 100k Logs, there will sometimes be problems reading newest or older logs
- Fix read of stormflow conditional logs of the 10 last ones. Problem if there haven't been made a reset after clear of logs.
- Fix read of Chip ID was possible getting bigger than 48bit.
- Fix Modbus TCP "Transaction Identifier" was not returned as received. Only a problem in new implementation of scada system, that is using Modbus TCP and not just transmit RTU data in TCP package.

## 840054-003 Chatter Email (compare to 850053-005)

### *What is new / changed compare*

- Rounding float printout to sms, e-mail clear text and e-mail CSV to closes value that fitting setting for number of digits to show (ex 0.039856 with 2 digit show 0.40 and not 0.39 as before )
- Added extra check and retry if email communication if failing during email transmission (also added extra internal log number 705 to log modem error code for this)

### *Bug fixed*

- In email clear text and CSV, the Intensity pulses is not converted using the conversion factor (like done for SMS).
- Fix that when log is full at 100k Logs, there will sometimes be problems reading newest or older logs.
- Fix read of Chip ID was possible getting bigger than 48bit.

## 840004-001 Chatter Database (DB) (compare to 850003-003)

### *Limitations*

- In some cases communication fails with chatter link, because modem communication or sensor communication is blocking for the communication. (Also the same problem for older version)
- Discontinue MJK Serial number is always read as "00000" (is not long enough to actually contain the real SN)
- Discontinue some of the unused settings like 24h /12h mode. (never used)
- Discontinue dongle setup and is always off.
- IS NOT RECOMENTED FOR DOWN GRADE TO 850002 / 850003 (if done, then all settings has to be check or rewritten with Production PC SW 840126)

### *What is new / changed compare*

- Change AI + INET scaling to be done in the same way as RTU + EMAIL (old scale and calibration is used in older firmware from 850003-005)
- Added additional USB task acknowledge for better indicating to user what happen or failed during modem action.

### *Bug fixed*

- Fix that measurement call was not returning acknowledge when finish.
- Fix that when log is full at 100k Logs, there will sometimes be problems reading newest or older logs.
- Fix Low Bat Alarm, INET Error(not yet support by the Frontend or database)
- Modem time + Online time was showed incorrect in Chatter Link